

 McWane Science Center

Explore your World



Join the quest across
land, sea, and space.

CREATED BY
scitech
PERTH • AUSTRALIA

imagine
exhibitions



Letter from the President

Let's go exploring! There are so many new things to see and do at McWane Science Center this spring. Our new traveling exhibit, Explore Your World, can be found on our third floor. Who knew reading maps could be so much fun? You can use coordinates to play a giant game of Battleship, navigate through shipwrecks and underwater reefs, release rubber ducks into the world's oceans, or escape a virtual building. You will be having such a good time you won't realize how much you are learning about math, geography, astronomy and more!

You and your friends are invited to stomp out a tune on our brand-new giant piano keyboard, located near the stairwell on the third floor. On the first floor our "loved to death" dance floor has been replaced with a cool new exhibit called "Level Up", which allows you to challenge yourself or others to a variety of electronic games played through projection onto the floor. You will love exploring our Adventure Halls to find these new exhibits and lots of other great activities!

Your explorations can continue in our IMAX with Laser Dome Theater as you visit exotic locations on our giant screen. See the glorious landscapes of the Arctic or follow the migration of the incredible animals across the African continent in *Serengeti*.

I invite you to explore all the great things McWane has to offer this Spring. If you aren't already a member, I hope you will consider purchasing a membership plan that is right for your family so you can explore McWane's exhibits and programs throughout the year.

I look forward to seeing you at McWane!

Amy Templeton
President and CEO

Contents



COMING SOON TO IMAX

Check out all the amazing movies we have in store for you to enjoy



EXPLORE YOUR WORLD

See what this exciting new exhibit has to offer



NATIONAL VOLUNTEER WEEK

Celebrate our volunteers & learn how you can become one too!



LEVEL UP!

Are you ready to get your game on in this immersive gaming experience?



IN MEMORIAM - BRUCE BIZZOCO

We wish farewell to a much loved McWane volunteer and donor



BEAKER BASH 2023 WRAP UP

Thank you to our sponsors and partners for this amazing evening

2023 BOARD OF TRUSTEES

Stephen Owens, Chairman • Nick Willis, Past Chairman
Zac Riddle, Treasurer

Pronce Acker, Galvin Billups, Harrison Bishop, Maggie Bolln,
William W. Brooke, Henna Budhwani, Milton Davis,
Arthur Fisher, Jr., Courtney French, David Germany, John Harbert,
David Killion, Amanda Loper, Farah Lubin, Katie Bee Marshall,
Barbara Martin, Kate Mather, Lee Meadows, Jeanne Monk,
Lenus Perkins, Matt Pierce, Travis Pritchett, Carolyn Ratliff,
Jim Screws, Adrienne Starks

PRESIDENT/CEO

Amy W. Templeton

2023 ENDOWMENT BOARD

William W. Brooke, President

Nina Botsford, Frank Caley, Sheri Cook, William Dow, Norman Jetmundsen,
Charlie Miller, Charles Powell, Travis Pritchett, Ashley Robinett,
Bowen Thagard, Forest W. Whatley, Jr., TJ Willings, Nicholas Willis

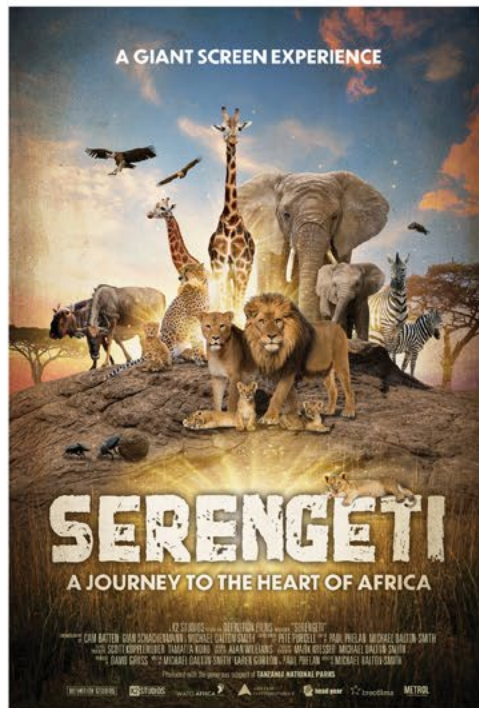
*McWane Science Center is a 501(C)(3) nonprofit organization.
Our mission is to spark wonder and curiosity about our world through
hands-on science experiences*



WINGS OVER WATER

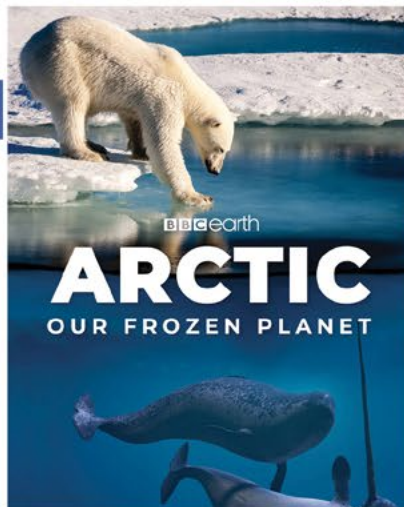
Leaving in March

Narrated by Michael Keaton, *Wings Over Water* comes soaring into the IMAX Dome Theater to tell the story of the epic journeys of three amazing bird families – the Sandhill Crane, the Yellow Warbler, and the Mallard Duck. Audiences will be captivated by the triumphs and challenges of these remarkable creatures that defy all odds and soar across mountains, deserts, cities, and forests as they head home to raise their young. See the documentary Forbes called “Stunning!” before it leaves McWane Science Center



SERENGETI

Life happens on the Serengeti at an unprecedented scale. It’s home to most of Africa’s iconic animals, and hosts one of the world’s greatest natural events – the annual wildebeest migration. Nature has orchestrated a perfect symphony in which every species has a very distinct role to play in a larger story – the balance of an entire ecosystem. We’ll see it through the eyes of the youngest members of our animal cast as they imitate their parents, and learn about the mighty roles they’ll play. Prepare to be awed by this film and learn how nature works in one of the world’s greatest ecosystems.



UPCOMING DOCUMENTARY

Arctic: Our Frozen Planet

March 24

At the top of our planet lies a magical realm of snow and ice – the Arctic. Every year it is transformed by an annual cycle of freeze and thaw. For millennia, this steady seasonal beat has allowed life to thrive. But our planet is warming, upsetting this natural balance and the Arctic is changing faster than anywhere else on Earth. Scientists are now discovering that what happens here, affects us all. We will all be impacted by a warming Arctic but none more so than local communities. Working with scientists, together they are shedding light on how changes to the Arctic’s natural balance affects each and every one of us, and they haven’t given up hope. Now it is up to us all to combat global warming and ensure there is a future for this fragile wilderness... Our frozen planet.



DUNGEONS & DRAGONS:
HONOR AMONG THIEVES
MARCH 31



THE SUPER MARIO BROS.
MOVIE
APRIL 7



GUARDIANS OF THE GALAXY:
VOLUME 3
MAY 5



THE LITTLE MERMAID
MAY 26

PLAN AHEAD

McWane Science Center special days in 2023 are presented by



History Makers: Women in STEM

Every weekend in March

Celebrate Women's History Month each weekend in March as we showcase the rich and diverse history of STEM and its even more diverse present and future. Hands-on programs throughout the day will highlight the lives and accomplishments of boss ladies of science.

Leftover Pi Day

March 15

A pizza has a radius z and thickness a . Its volume is pizza, $\pi * z * z * a$! That's what I call vol-YUM. Join us

March 15 for Leftover Pi Day as we take a bite out of math and crunch on some numbers.



Global Recycling Day

March 18

Blue bins and recycling symbols have become commonplace, but what do we really know about recycling? What do the numbers on recyclables mean? What do we do with our batteries? Why can't we recycle glass? From recycling relays to Trash to Treasure, Global Recycling Day provides the opportunity to answer your questions.



Brain Awareness Week

March 30 - April 2

Having a fish tank at home is good for the brain due to all the indoor fins. The thing that allowed you to groan at that pun? - Your brain! Explore this vital organ with UAB Neuroscience as they lead dissection workshops and demonstrations that test our senses.



The Great McWane Egg Drop

April 8

You won't need your Easter basket for this day of eggsplosions, eggperiments, and an egg drop for the ages. If your egg drop contraption survives the fall from McWane's roof, you'll win our golden egg trophy!



Robotics Week

April 12 - 16

From AI to *Wall-E*, *Terminator* to lawn mowing Roombas, robots are an inescapable part of our lives and pop culture. But what is a robot? How do they work? What emerging tech can we expect? Explore these questions and more as we ramp up for a week of robotics.



Earth Day

April 22

Celebrate Earth Day with hands-on programs that foster an appreciation for our world. Join us as we showcase the work of local organizations and explore actionable ways to protect our planet.



Astronomy Week

April 26 - 30

From tossing a DART at an asteroid to the discovery of potentially habitable Tatooine-like planets, it's an exciting time to look to the stars. This astronomy week, engage with hands-on programming that explores the cosmos.



Asian American and Pacific Islander Heritage Month

Every weekend in May

Celebrate Asian American and Pacific Islander Heritage Month each weekend in May with programs that highlight the lives of AAPI scientists. Engage with themed experiments throughout the day to learn more about their groundbreaking work.



Math in the Museum

May 12 - 24

In honor of Fields Medal winner Maryam Mirzakhani's birthday, we're celebrating the achievements of women in mathematics. Blast off to new heights with hands on programming that uncovers the bizarre, bewildering, and beautiful world of mathematics.



The Science of Cycling

May 20

McWane and Redemptive Cycles are working in tandem to celebrate National Bike Month with the Science of Cycling! Stretch your legs and roll on down to McWane to learn how your favorite pastime can positively impact the environment, your community, and your health.

VISIT MCWANE.ORG FOR DETAILS



McWane Science Center
BIRTHDAY LAB

we have birthdays down to a science.

Birthdays are BACK at McWane Science Center!
We are excited to welcome birthday party experiences to our guests once again.

Each Party Package Includes:

- Free Admission for the Birthday Child
- Room Rental
- Admission to the Adventure Hall
- Table decorations & plastic-ware (cups, plates, napkins, forks & spoons)
- Choice of lemonade or fruit punch

Themed Party Options:

Dinosaur, Pastel/Rainbow, & McWane Science Party



Pricing:

- **Children** \$20 per child, minimum of 10 (excluding Birthday child)
- **Adults** \$10, minimum of 4

Member discounts are available!

For more information,
please email
birthday@mcwane.org



**Camp
McWane**



Join McWane Science Center this Summer

June 5 - July 28

Pre-K through 7th grade

Registration is Open Now!

visit mcwane.org/learning/parents/camps for more info

Explore your World

Join the quest across
land, sea, and space.

Now Open

CREATED BY
scitech
PERTH • AUSTRALIA

imagine
exhibitions

Since our very beginning, humans have been explorers—discovering new lands, adventuring through unknown waters, and traveling beyond the stars. Every new trip takes us further and further beyond the known and into a wilderness waiting for discovery. So how have we been so successful all these years? Well, we've had a little help from maps. For thousands of years, humans have documented their surroundings. From cave paintings and stone drawings, through printed maps to new digital mapping technologies, we have documented where we have been and predicted where we want to go next.

McWane Science Center is excited and honored to introduce mapping, navigation and discovery to our visitors this spring through our current traveling exhibit—Explore Your World. With this exhibit, we will spark interests in geography, cartography, earth and space science, engineering, math, and physics. Our visitors will learn about coordinates as they play a giant game of Battleship. Navigate the earth using the stars. Investigate shipwrecks. Pilot a simulated underwater vehicle. Build your own town, and so much more! Explore Your World will be at McWane Science Center now through May 2023.



To begin your journey through Explore Your World, grab a map quest sheet at the entrance. As you travel to each your quest exhibit areas, document your journey and meet the challenges of each adventure.

Some of the quest areas you will encounter include:



MAP MAKING

Maps are made from layers of data. Different lines or colors on a map can be shown to join areas of equal height (isohypse), pressure (isobars), equal temperature (isotherms) or equal rainfall (isohyets). This can help scientists to see patterns, track storms, or plot changes in climate. In this exhibit, you can manipulate our landscape in this giant formation sandbox and create your own patterns.



CHARTER YOUR OWN SHIP

Oceans are important to life, and they are home to vast amounts of sea life. Our oceans affect our weather and environment. They serve as an important source for food and medicines, and play a key role in global transportation. But of all of the things we have mapped well, oceans are still mostly unknown. In this exhibit area, you can navigate an AUV (autonomous underwater vehicle) to map the ocean, all while steering a ship around ocean hazards and hidden obstacles.



GIANT BATTLESHIP

This exhibit area helps visitors use coordinates, and coordinates help pinpoint locations. Using an agreed-upon system of numbers or letters or a combination of the two, we can provide our exact location to someone else. Our visitors will learn about latitude and longitude as they play an intense but super fun, game of battleship with their friends.



SONAR STATION

We can use reflected sound to measure the depth of the ocean or find objects in it. Animals also use sonar to navigate and find their prey. In this exhibit, you can use sonar detection to discover the heights and locations of your own “underwater” objects.

National Volunteer Week

Join us this April as we celebrate National Volunteer Week! Our volunteers have made a huge impact all over McWane and we are so excited to show them how much we appreciate their service. Check out a few of the ways volunteers are helping below.



Our Aquarist Volunteers assist our World of Water staff with tank maintenance, fish feeding, and much more! The next time you spend some time with our aquatic exhibits, think about the passionate team of people it takes to keep things running smoothly, and go out of your way to thank our volunteers.



In the Collections Lab, volunteers assist with the cataloguing and cleaning of fossils collected in the state of Alabama and beyond. Their painstaking efforts and attention to detail are an incredible contribution to McWane's mission and help our guests spark wonder and curiosity about our world.



At engagement stations throughout the Adventure Halls, you will see Adult and Teen Science Engagement Volunteers facilitating hands-on STEM programming in a conversational, accessible, and engaging way. These volunteers guide McWane guests through programs showcasing the relevance of STEM and demonstrating with our guests that science is for everyone!

We also have volunteers that go above and beyond by helping with administrative tasks, data entry, and special events. Our volunteers are quick to help out whenever a unique need arises!

If you would like to learn more about ways you can show your appreciation to our volunteers or are interested in volunteering at McWane, please contact Volunteer Services at volunteer@mcwane.org

Loose Parts Play

Have you ever watched your child use a familiar item in an unusual way? In a little one's imagination, paper tubes may become telescopes and tree stumps could be tropical islands! This type of imaginative play where children use materials creatively is called loose parts play. Through loose parts play, children form connections to objects based on shape, color, texture, function, and space. In other words, your child is building critical thinking and creative problem-solving skills just by being their playful and curious self. This spring, build your own loose parts set and watch your little one's imagination run wild as they explore various materials and their infinite possibilities.

Please be mindful that some items may be choking hazards for younger children. Adult supervision is recommended.

Some of Our Favorite Loose Parts:

- Rocks
- Buttons
- Twigs
- Bottle Caps
- Pom Poms
- Dry Pasta
- Acorns
- Golf Tees

Loose Parts Challenges to Try at Home:

Pizza Maker: With chalk, draw a large circle on the sidewalk and add various loose parts. What kinds of ingredients do the pieces represent?

Flower Garden: Create a sidewalk garden by arranging loose parts in the shapes of flowers.

Biome Builder: Assemble an ocean scape or forest using loose parts. What pieces can you use to create the animals that live in these biomes?

Join us this season in the Tinker Shop as we explore more with loose parts! The Tinker Shop is located in Itty Bitty Magic City and is open Thursdays and Saturdays from 2:30-3:30. Program themes vary. Museum admission required.



THIS SPRING BREAK
DISCOVER
SCIENCE

AT

McWane
Science Center

Enjoy science all year long!

GET A MEMBERSHIP AT MCWANE SCIENCE CENTER

Learn more at mcwane.org/become-a-member or call (205) 714-8200

LEVEL UP

Immersive Gaming Experience

It's time to Level Up!

The Adventure Halls now features a new exhibit on its first floor that is sure to thrill both gaming enthusiasts and technology aficionados alike. *Level Up* is an immersive gaming experience by Flying Fish exhibits that offers visitors the chance to explore a variety of different games.

One game included in the exhibit is *Crossing Space*, which allows visitors to explore a virtual universe and travel to different planets, all while completing various challenges and tasks. The game offers a unique and exciting way to learn about space and the different celestial bodies in our solar system.

The *Level Up* exhibit is a must-see attraction for anyone interested in technology or gaming. With a variety of different games, visitors are sure to have a thrilling and unforgettable experience.

Finally, the walkable piano, a popular attraction that has been a part of the McWane Science Center for several years, has also gotten a new look. This interactive exhibit allows visitors to walk on a giant piano and create their own musical compositions. The new version of the exhibit offers a modernized and improved experience, with enhanced interactivity. The updated walkable piano is not part of *Level Up* but was also created by Flying Fish exhibits. It can be found on the third floor.

***Level Up* and the new digital piano were made possible by the Mike and Gillian Goodrich Foundation**



In Memory of



Bruce D. Bizzoco
(1949-2022)

We are saddened to announce the passing of long-time McWane volunteer, donor, educator, and friend, Bruce D. Bizzoco. Bruce began volunteering in McWane's Collections Department in 2010 where he became a beloved member of the JunBugs volunteer team. Bruce came to McWane after a long career at Shelton State Community College where he was both a Dean and faculty member in the Anthropology Department. As a professional archaeologist who had excavated countless sites across Alabama, Bruce was recruited to help inventory McWane's vast collection of archaeological artifacts. In addition to bringing his extensive archaeological expertise to the Collections Department, Bruce also brought his love of teaching to the team. Over the years, Bruce mentored numerous undergraduate and graduate students from the UAB Anthropology Department and helped co-teach a summer field school at Sloss Furnaces with McWane's Director of Collections, Jun Ebersole.

Bruce was the true definition of a Renaissance man. In addition to being a professional archaeologist and educator, he was an avid fencer, restored antique automobiles, studied military history, and was active in politics. Bruce will always be remembered for his willingness to help anyone that asked, as well as for his lightheartedness, great sense of humor, and endless energy and enthusiasm for all his varied passions. Bruce is greatly missed by all that knew him.



McWane Science Center
BEAKER
BASH '23
i am a scientist

Sponsored by



Medical Properties Trust



Presented by Medical Properties Trust, Beaker Bash 2023—I Am a Scientist—engaged youth of all ages in hands-on, science opportunities that helped them start to build their own science identity. Visitors met engineers, tech innovators, a paleontologist, aquarists, neuroscientists, forensic scientists, physicists, chemists, geologists, inventors of art and science, and so many more STEM professionals. All of whom were there to demonstrate that science is for everyone and science is in everything.



McWane Science Center, with the help of our partners and sponsors, changed the Beaker Bash format for 2023. Instead of serving as a fundraiser, this year's event was offered to the community at no charge with the goal of ensuring that the event was available to anyone in our community, regardless of their ability to pay. In addition to this event, our 2023 Beaker Bash sponsors will help us pay for 2023 educational programming and services provided at no charge to youth and families under-represented at McWane Science Center.

Our STEM Partners included:

Engineering

- National Society of Black Engineers
- Dr. Pillai from UAB
- Sidney H. May, P.E., LLC
- Dr. Dale Feldman

Physical Science

- Dr. Sheree Finley and Alabama State University
- Dr. Vineeth Vijayan with Alabama State University
- Redemptive Cycles
- Left Hand Soap Company

Art & Science

- Shaheed and DJ Supreme and The K.R.U.
- Craig Brandwein from UAB

Technology

- Vishesh Vikas from the University of Alabama
- Dr. Uma Kannan and Alabama State University
- UAB Undergraduate Neuroscience Society

Life Science

- Dr. Farah Lubin and the UAB Graduate Neuroscience Scholars
- Jun Ebersole, Director of Collections
- Alabama Wildlife Center

Earth & Space Science

- Sloss Furnaces
- Sam Kindervater
- Tonia Michele, WBRC Meteorologist
- The Birmingham Astronomical Society of Alabama

And, of course, the amazing McWane Science Engagement Team!

McWane Science Center would like to offer our sincerest thanks to our 2023 sponsors for making Beaker Bash and our STEM education programs possible this year.

SCIENCE GENIUS AND PRESENTING SPONSOR



INNOVATOR SPONSORS



EXPLORER SPONSORS



DISCOVER SPONSORS



INSPIRER SPONSORS



beansprouts®

A hip, healthy cafe at McWane Science Center



Organic espresso bar • Soups, salads & sandwiches • Pizza
Award-winning kids' menu • Smoothies • Grab-n-go snacks

The beansprouts' PhilosoPEA:

SPARK KIDS' APPETITES FOR YUMMY, GOOD-FOR-YOU FOOD;
AND DELIGHT GROWN-UPS WITH A HAPPIER MEALTIME!